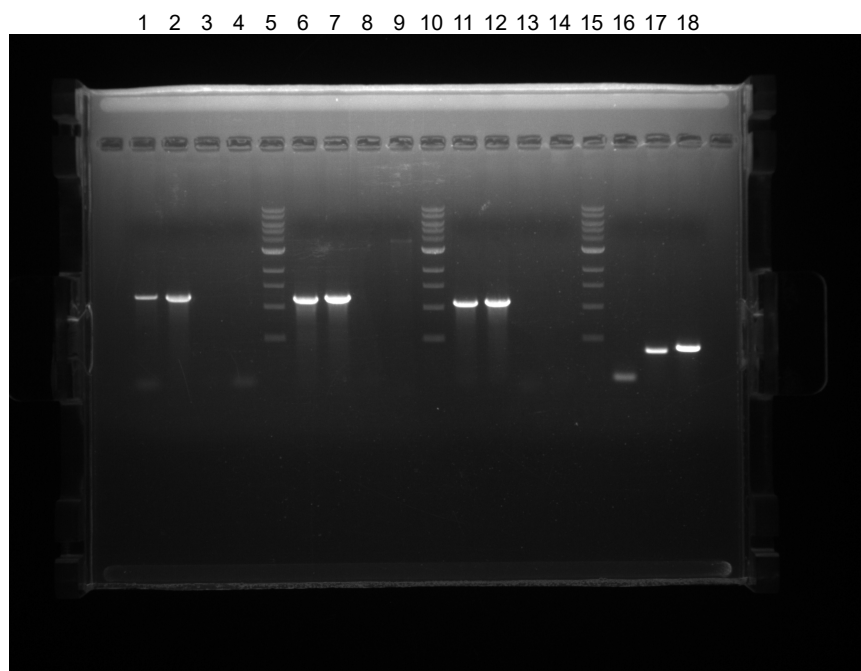


(File: ectopic\_NAT\_transformants.jpg)

- 1 - CBS7841 transformant 1, *NAT* marker
- 2 - CBS7841 transformant 2, *NAT* marker
- 3 - CBS7841 transformant 3, *NAT* marker
- 4 - CBS7841 transformant 4, *NAT* marker
- 5 - CBS7855 transformant 1, *NAT* marker
- 6 - CBS7841 WT, *NAT* marker
- 7 - CBS7855 WT, *NAT* marker
- 8 - pSEC63, *NAT* marker
- 9 - Ladder
- 10 - CBS7841 transformant 1, *FUR1* gene
- 11 - CBS7841 transformant 2, *FUR1* gene
- 12 - CBS7841 transformant 3, *FUR1* gene
- 13 - CBS7841 transformant 4, *FUR1* gene
- 14 - CBS7855 transformant 1, *FUR1* gene
- 15 - CBS7841 WT, *FUR1* gene
- 16 - CBS7855 WT, *FUR1* gene



(File: 12.23.2020\_mfalpna\_ste3\_dmc1\_mutants\_all\_jxns.jpg)

- 1 - *mfaΔ::NAT*, 5' flanking
- 2 - *mfaΔ::NAT*, 3' flanking
- 3 - *mfaΔ::NAT*, in-gene
- 4 - *mfaΔ::NAT*, spanning
- 5 - Ladder
- 6 - *ste3Δ::NAT*, 5' flanking
- 7 - *ste3Δ::NAT*, 3' flanking
- 8 - *ste3Δ::NAT*, in-gene
- 9 - *ste3Δ::NAT*, spanning
- 10 - Ladder
- 11 - *dmc1Δ::NAT*, 5' flanking
- 12 - *dmc1Δ::NAT*, 3' flanking
- 13 - *dmc1Δ::NAT*, in-gene
- 14 - *dmc1Δ::NAT*, spanning
- 15 - Ladder
- 16 - CBS7841 WT, *MFα*
- 17 - CBS7841 WT, *STE3*
- 18 - CBS7841 WT, *DMC1*

Note: only the lanes depicted in **Figure 5–figure supplement 1C and 1D** are indicated (and numbered) in these original gel images.